

CERTIFICATE OF LOCATION OF GOVERNMENT CORNER

EAST QUARTER Corner of Section 13, Township 107, Range 39, 5TH P.M.

STATE OF MINNESOTA, County of MURRAY

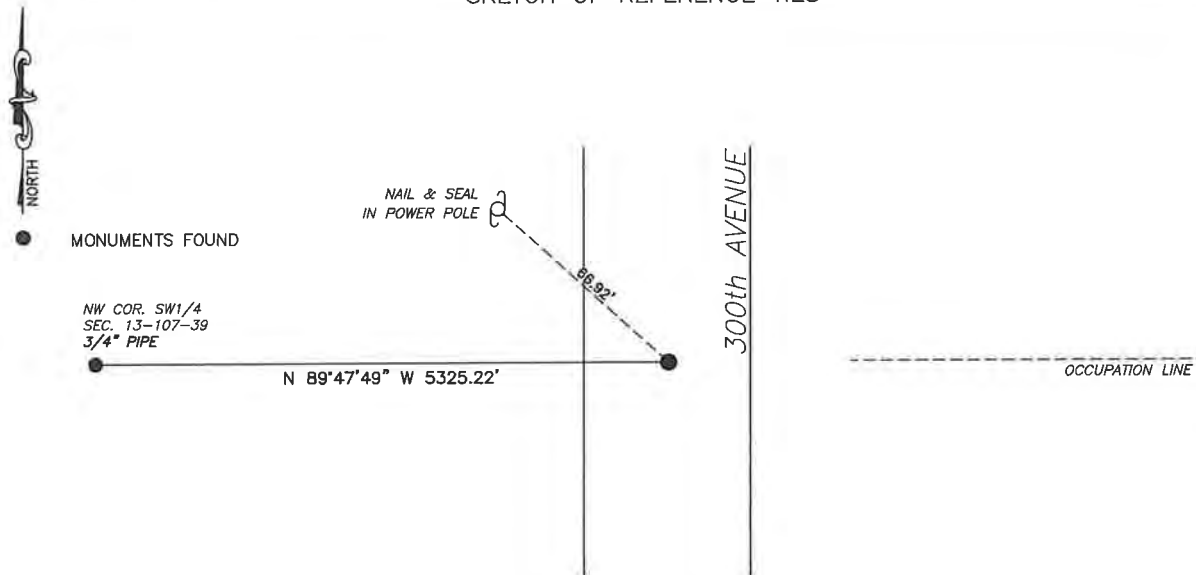
At the corner location shown on the sketch:

☒ On 4/3/2025 found a 1.5"x1.5" square iron monument.
DATE

☒ left monument as found, ☐ lowered monument, ☐ removed monument (explain)

☐ On _____ placed a _____
DATE

SKETCH OF REFERENCE TIES



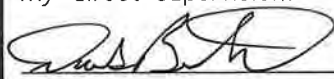
Murray County
Coordinate System NAD83 (1996)

N: 181994.934
E: 580030.706

WGS84
LAT: 44°04'21.2215"
LON: -95°27'43.8593"

Statement of evidence relative to this corner location is on back of page.

I hereby certify that this document and the data contained herein was prepared by me or under my direct supervision.



Daniel L. Bueltel
License No. 43844

6/19/2025
DATE

JUN 27 2025



MURRAY COUNTY RECORDER

Statement of Evidence

EAST QUARTER CORNER SECTION 13, T107N, R39W OF THE 5th P.M.

In July of 1861, J.W. Myers surveyed the township lines.

In September of 1861, L. Brockmann subdivided the township.

A survey from 1954 by M.E. Koopman notes an iron stake in grade for the corner.

County records dated June 12, 2012 notes a large steel stake found at the corner.

On April 3, 2025 Bueltel-Moseng Land Surveying found a 1.5"x1.5" square iron monument at the corner. Accepted the iron as the monument.